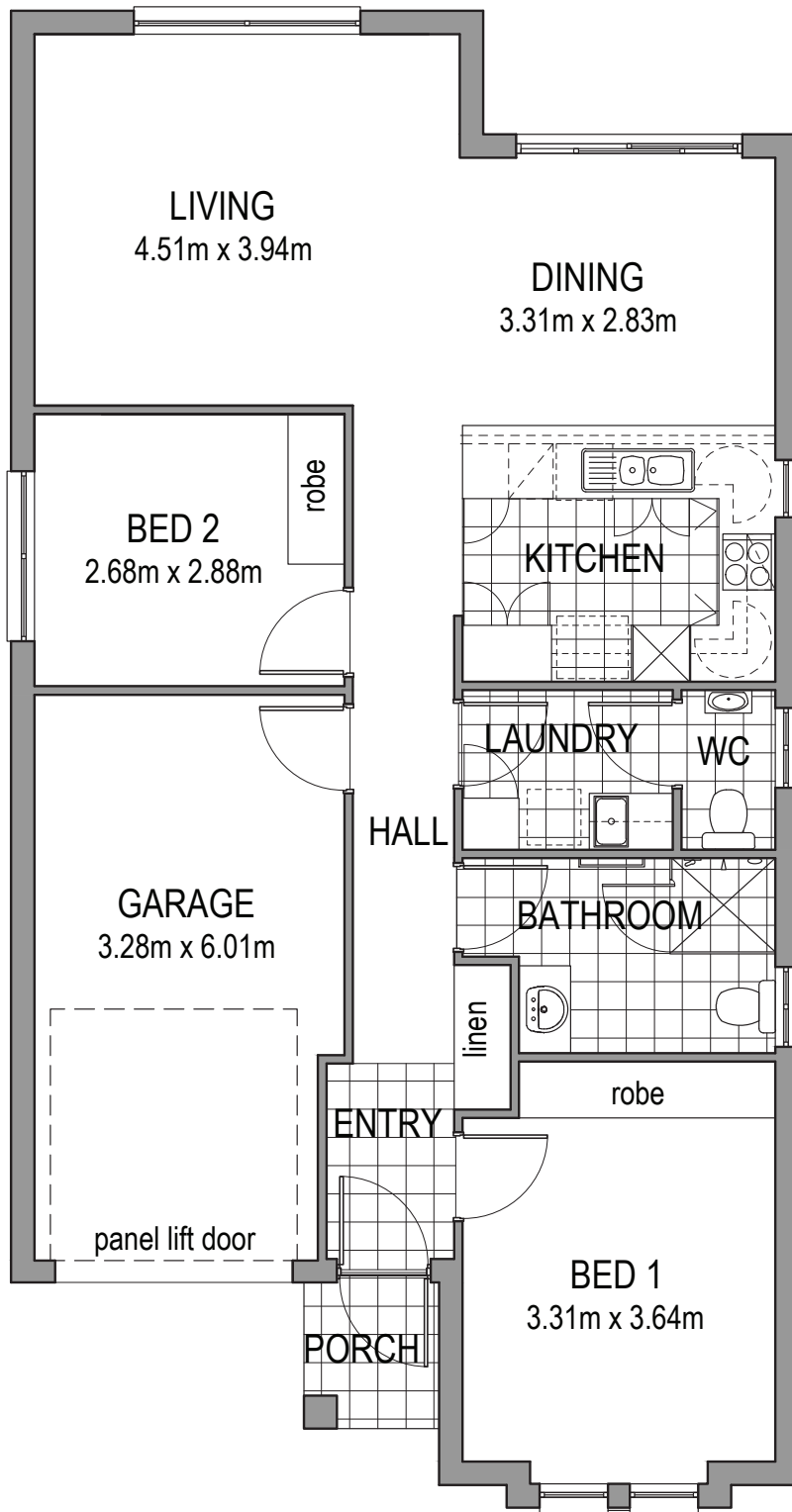




# Villa 74

2 | 1 | 2 | 1



## Specifications

Living	96.5m <sup>2</sup>
Garage	21.5m <sup>2</sup>
Porch	2.2m <sup>2</sup>
<b>TOTAL</b>	<b>120.2m<sup>2</sup></b>



**Oakfield Rise**  
Retirement Estate