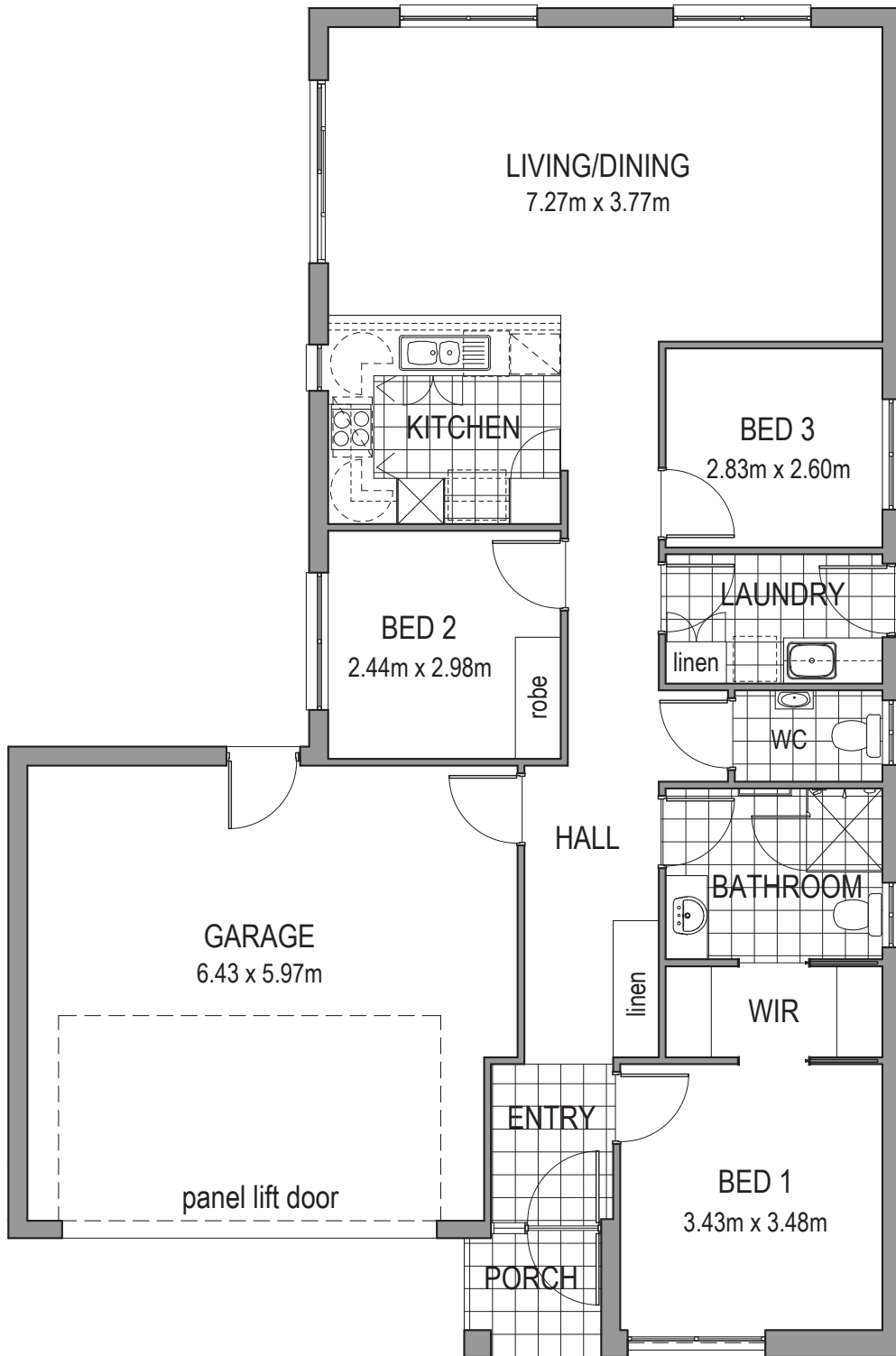




# Villa 79

3 | 1 | 2 | 2



## Specifications

Living	116m <sup>2</sup>
Garage	41.6m <sup>2</sup>
Porch	2.8m <sup>2</sup>
<b>TOTAL</b>	<b>160.4m<sup>2</sup></b>



**Oakfield Rise**  
Retirement Estate