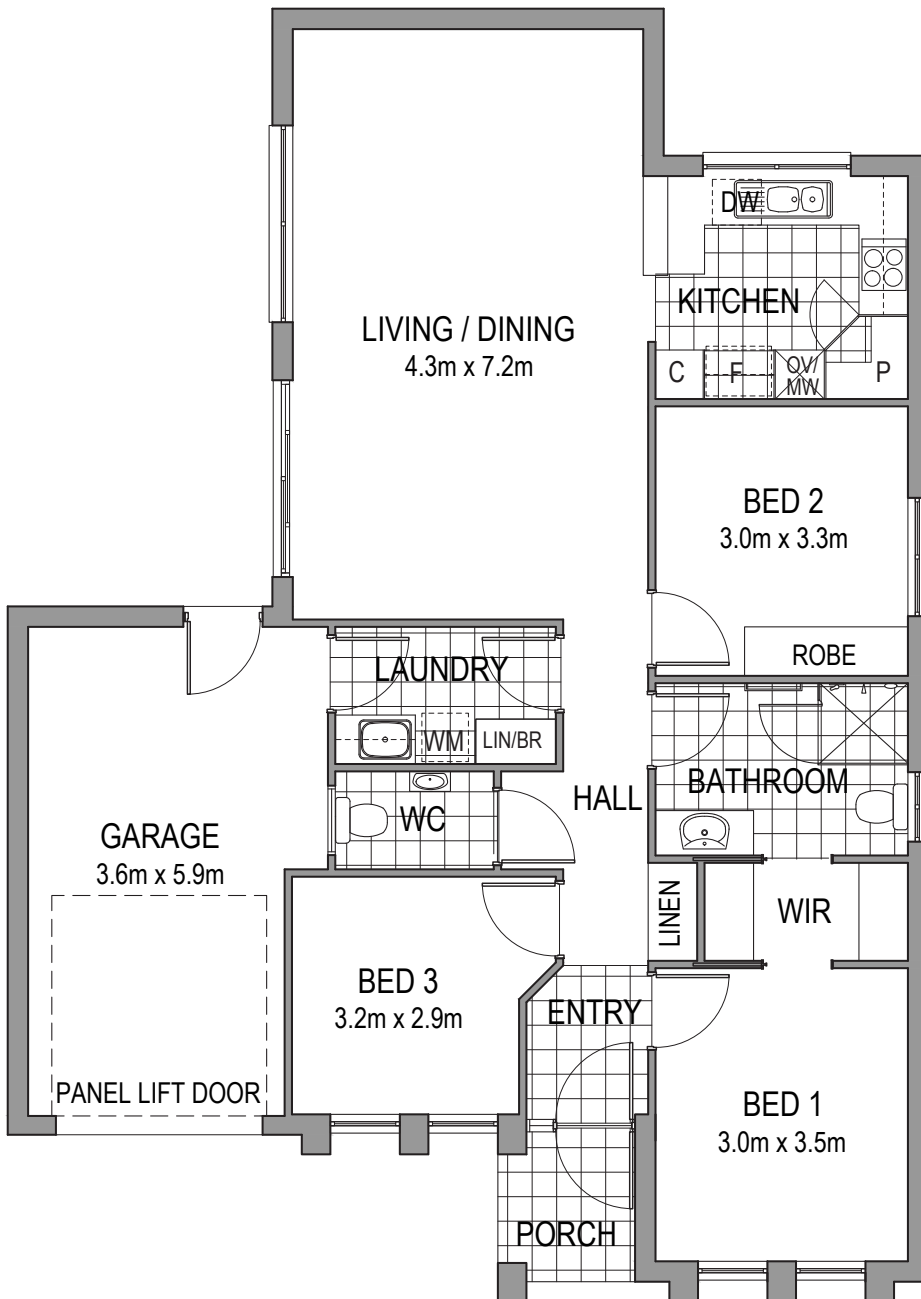




# Villa 12

3 | 1 | 2 | 1

## Pinedale



### Specifications

Living	109.2m <sup>2</sup>
Garage	23.4m <sup>2</sup>
Porch	3.0m <sup>2</sup>
<b>TOTAL</b>	<b>135.6m<sup>2</sup></b>

PLANS ARE INDICATIVE ONLY AND SUBJECT TO CHANGE WITHOUT NOTICE  
CORRECT AS AT FEBRUARY 2018



**Oakfield Rise**  
Retirement Estate