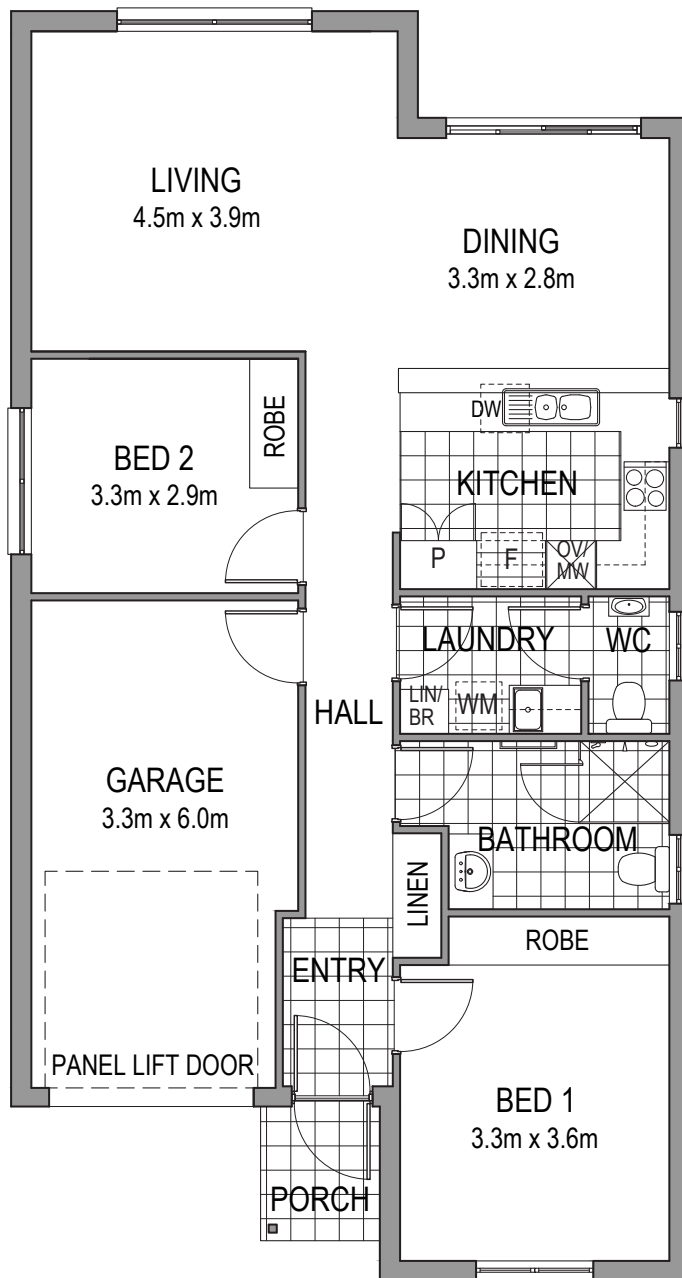




# Villa 22

2 | 1 | 2 | 1

## Fairfield



### Specifications

Living	95.9m <sup>2</sup>
Garage	21.5m <sup>2</sup>
Porch	2.4m <sup>2</sup>
<b>TOTAL</b>	<b>119.8m<sup>2</sup></b>

PLANS ARE INDICATIVE ONLY AND SUBJECT TO CHANGE WITHOUT NOTICE  
CORRECT AS AT FEBRUARY 2018